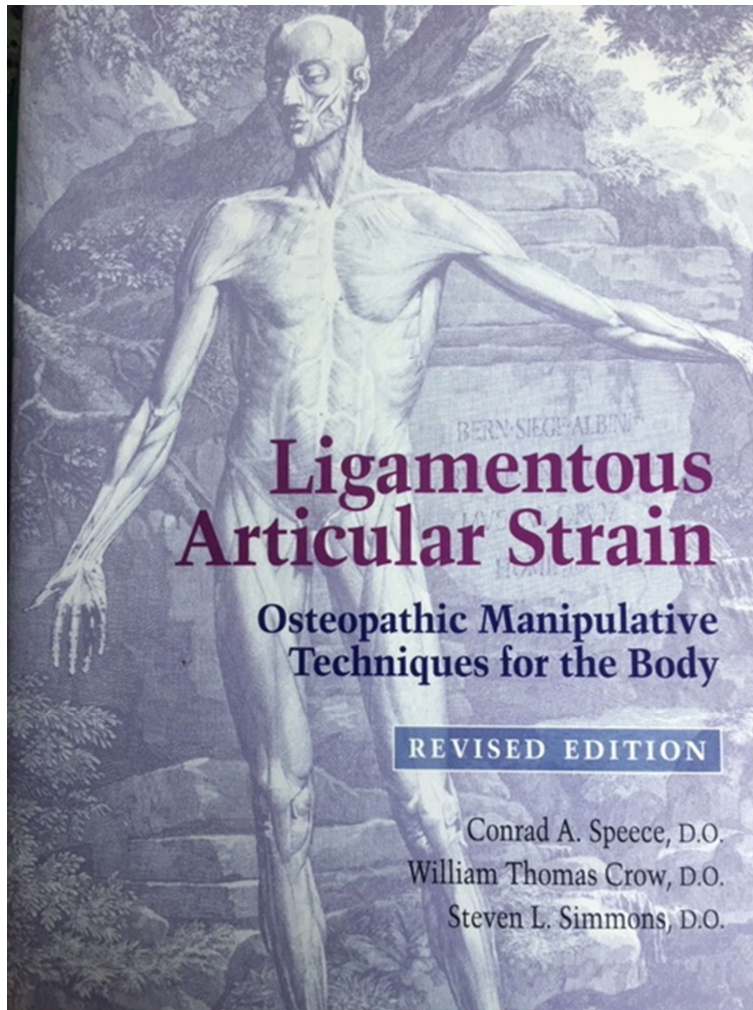




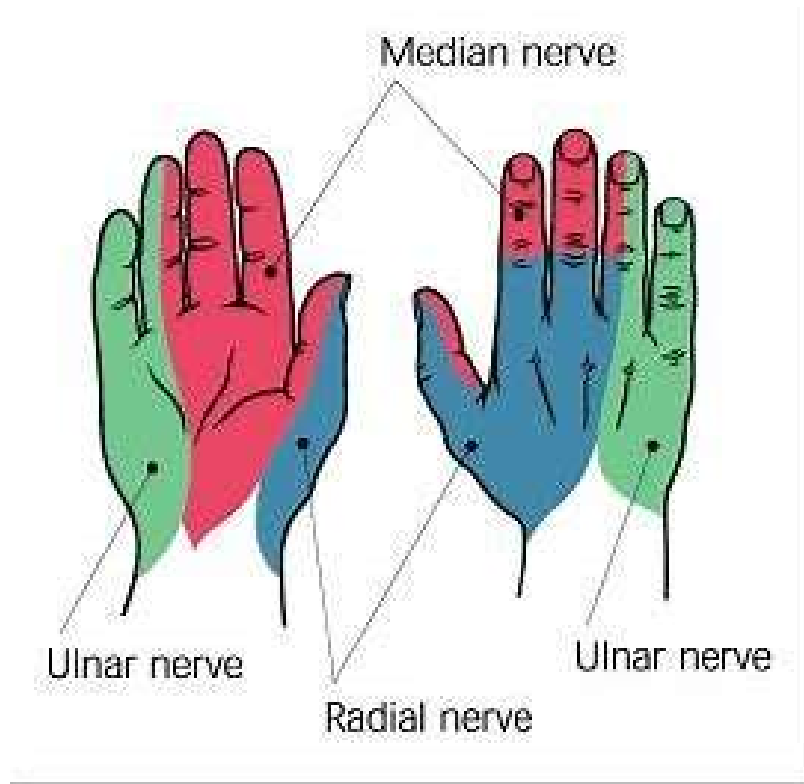
Osteopathic Approach to Treatment of Carpal Tunnel Syndrome

---Sheila Page, DO

---Neuromusculoskeletal Medicine



Sensory Distribution Median Nerve



© 2003 RENEE L. CANNON

Sensory Nerve Distribution

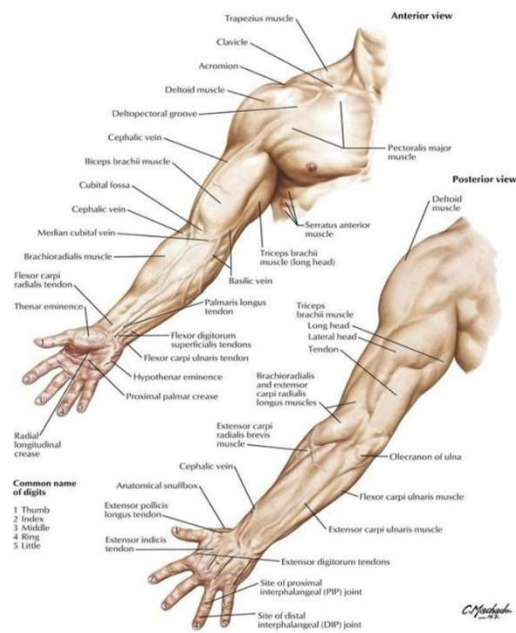
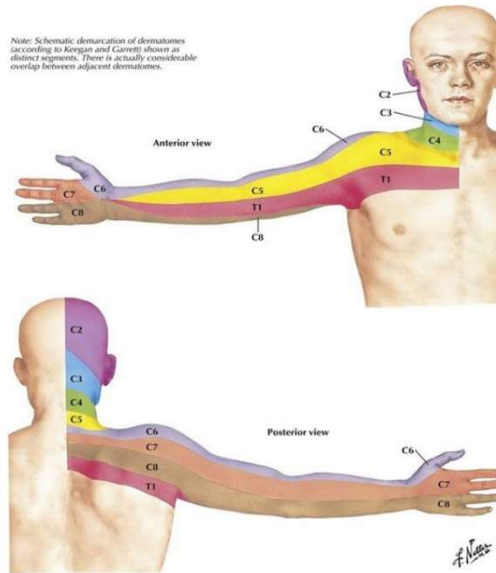


PLATE 398 Upper Limb: Surface Anatomy
See also [Plates 152, 242](#)

Cutaneous Anatomy



Note: Schematic demarcation of dermatomes (according to Keegan and Garrett) shown as distinct segments. There is actually considerable overlap between adjacent dermatomes.

PLATE 399 Dermatomes of Upper Limb

Proximal Median Nerve

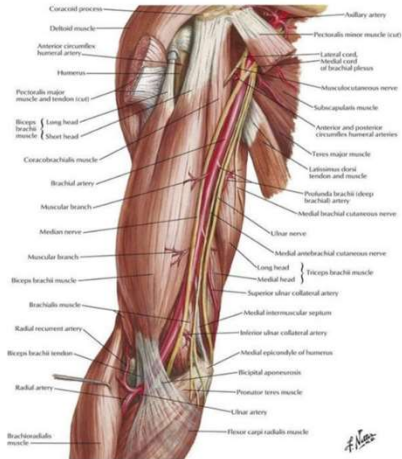


PLATE 419 Brachial Artery in Situ
See also [Plate 401](#)

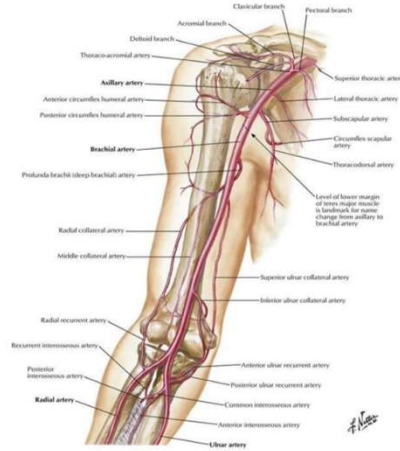
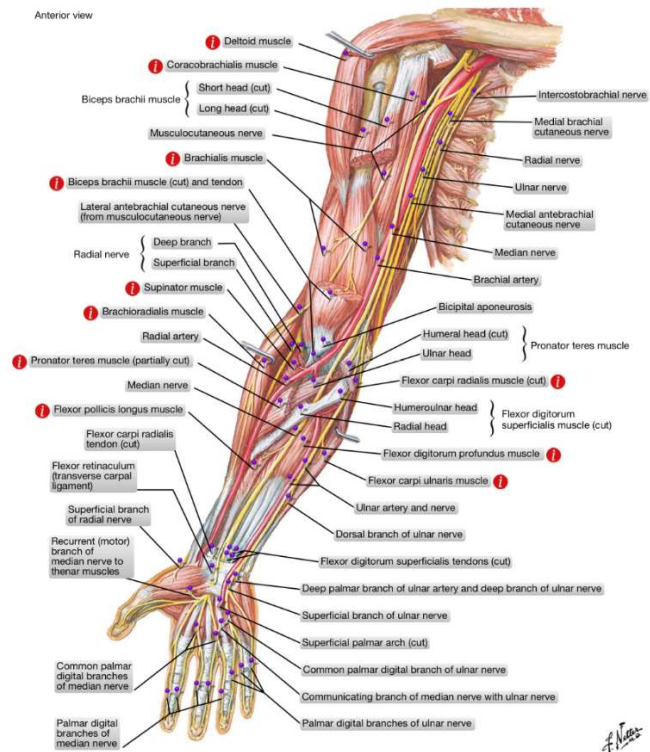


PLATE 420 Arteries of Arm and Proximal Forearm
See also [Plates 414, 433, 453](#)

Anterior view



Fascial sling, Pronator Teres

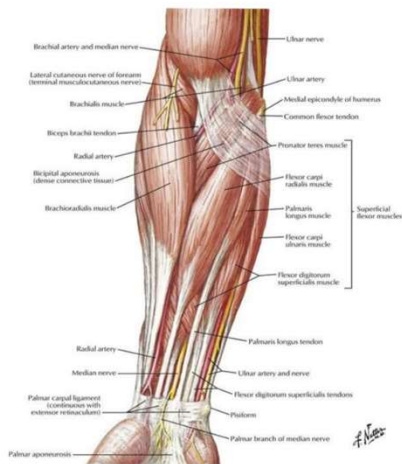


PLATE 432 Muscles of Forearm (Superficial Layer): Anterior View
See also [Plates 463, 464](#)

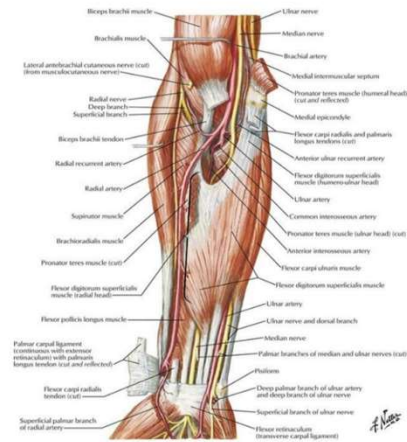
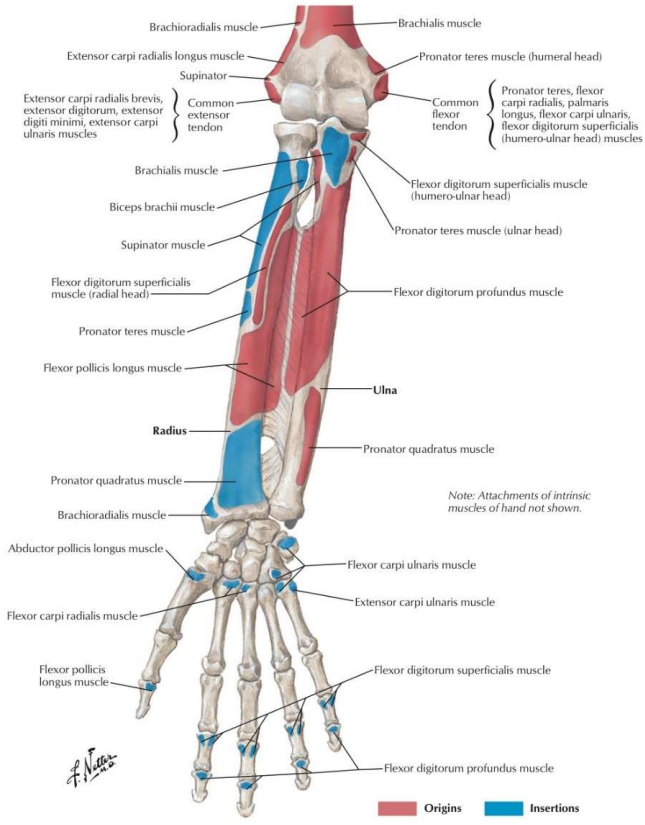


PLATE 433 Muscles of Forearm (Intermediate Layer): Anterior View
See also [Plates 420, 463, 464](#)

Pronator Teres Attachment



Key Structures

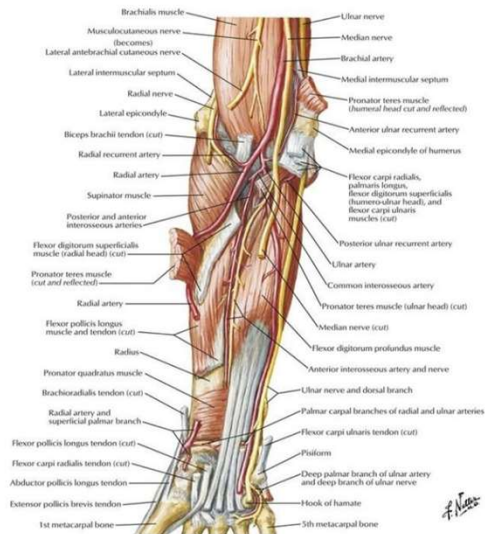


PLATE 434 Muscles of Forearm (Deep Layer): Anterior View
See also [Plates 426, 464](#)

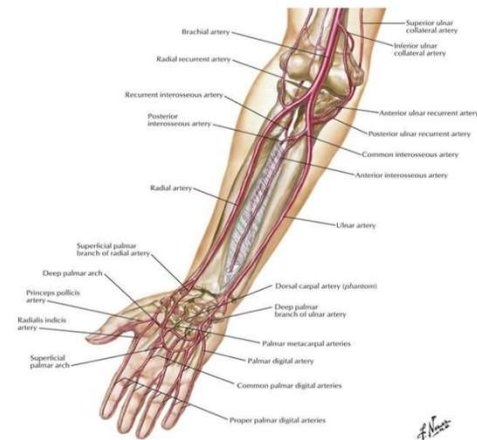


PLATE 435 Arteries of Forearm

Wrist Extensors/Flexors

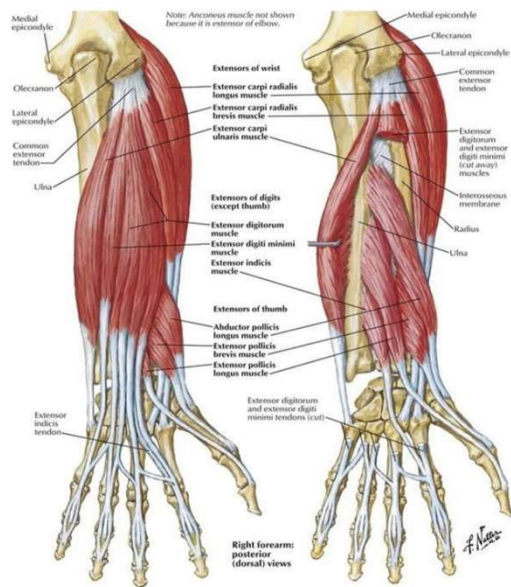
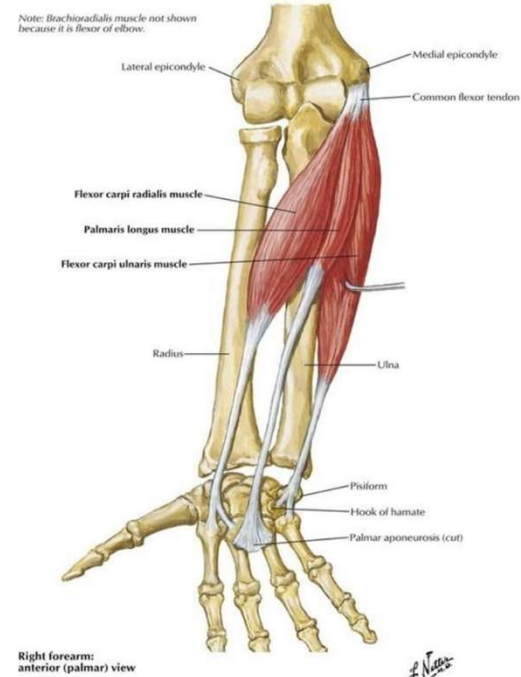


PLATE 427 Individual Muscles of Forearm:
Extensors of Wrist and Digits
See also [Plate 438](#)



Right forearm:
anterior (palmar) view

Radial Head/ Interosseous Membrane

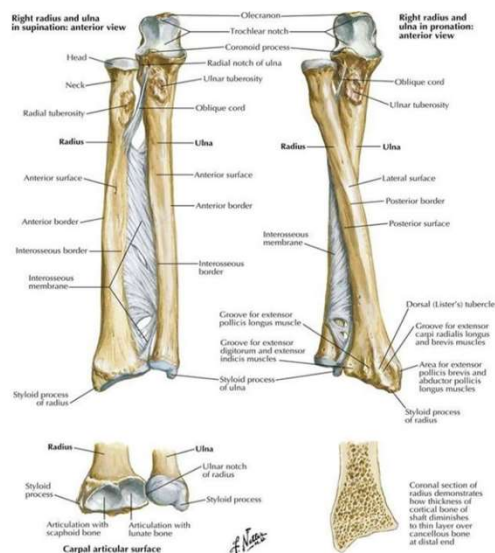


PLATE 425 Bones of Forearm
See also [Plates 439, 442](#)

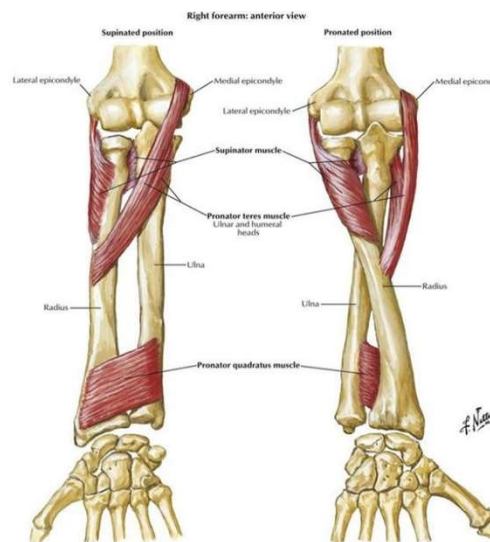
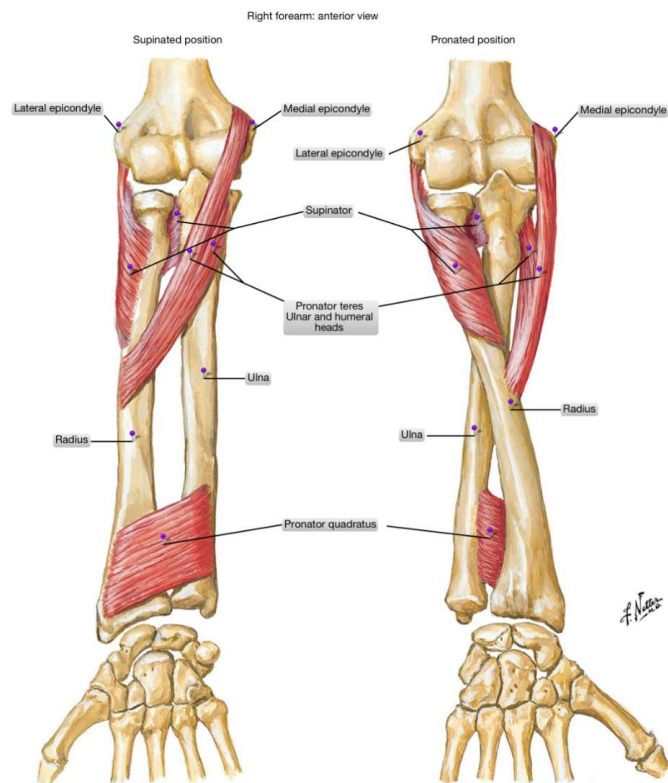


PLATE 426 Individual Muscles of Forearm:
Rotators of Radius
See also [Plate 434](#)

Pronator Teres



Digital Flexors and Fascial Sling

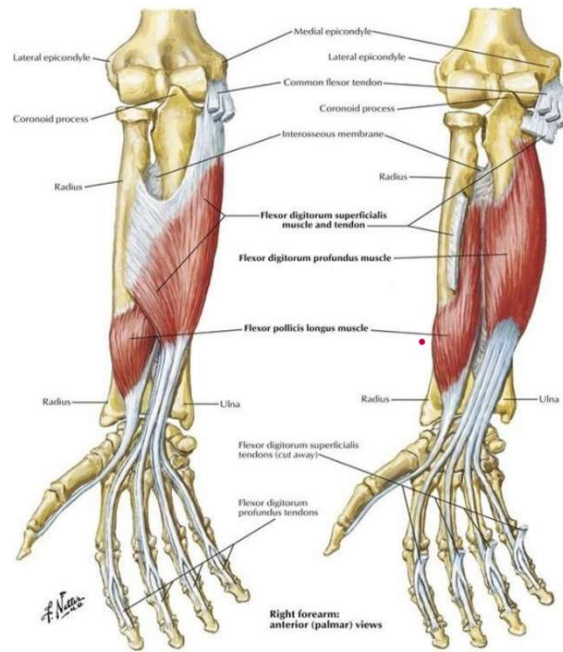
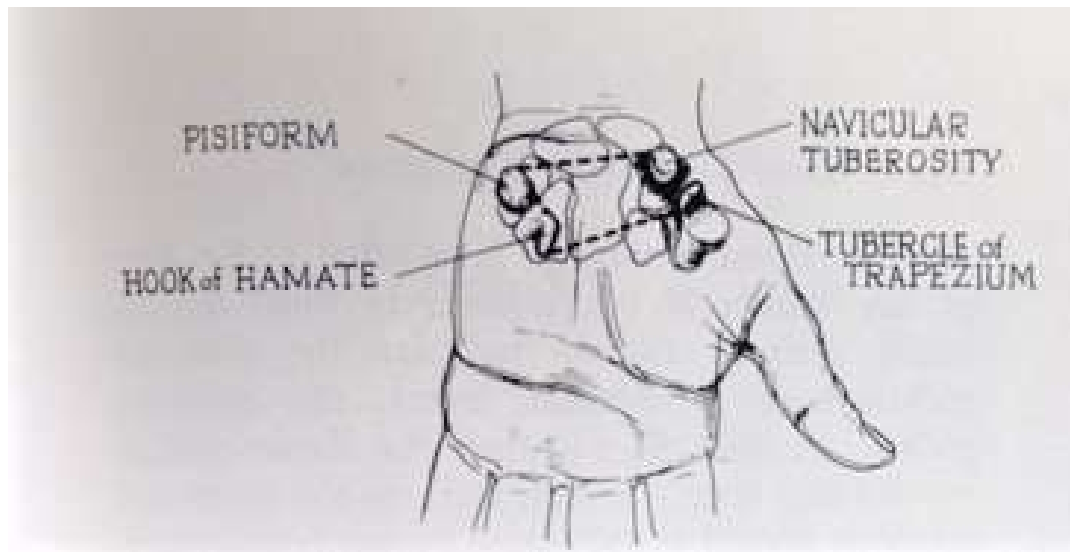
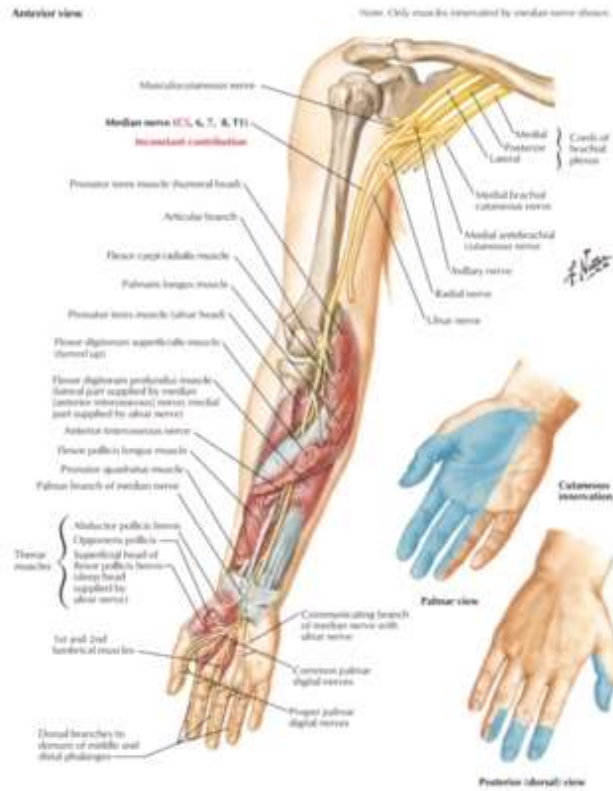


PLATE 429 Individual Muscles of Forearm:
Flexors of Digits

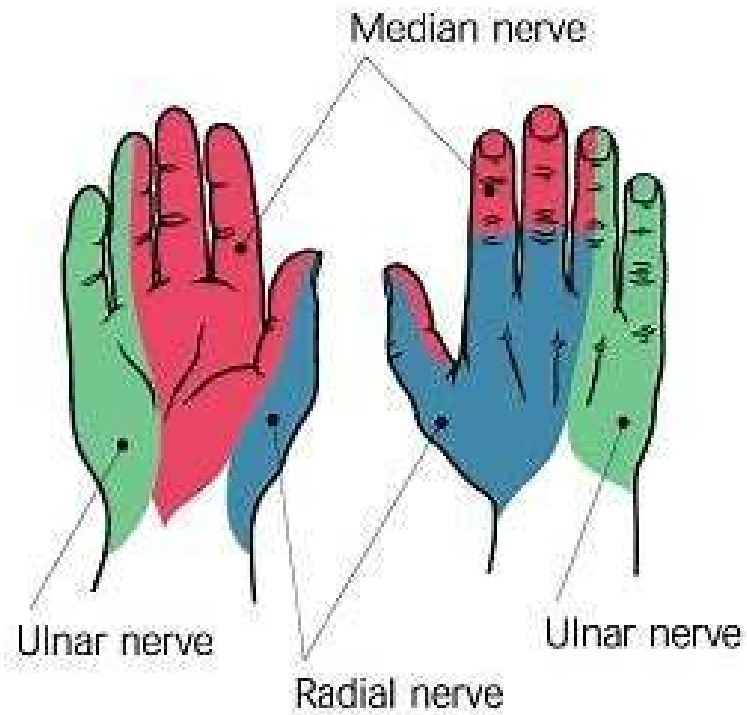
Surface Anatomy of Carpal Tunnel



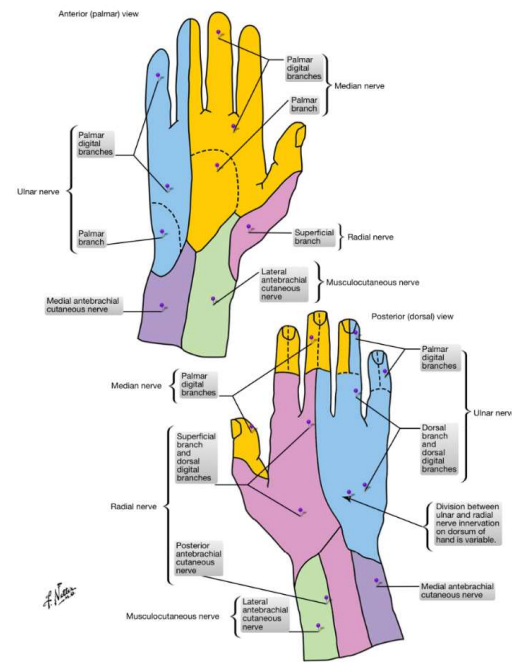
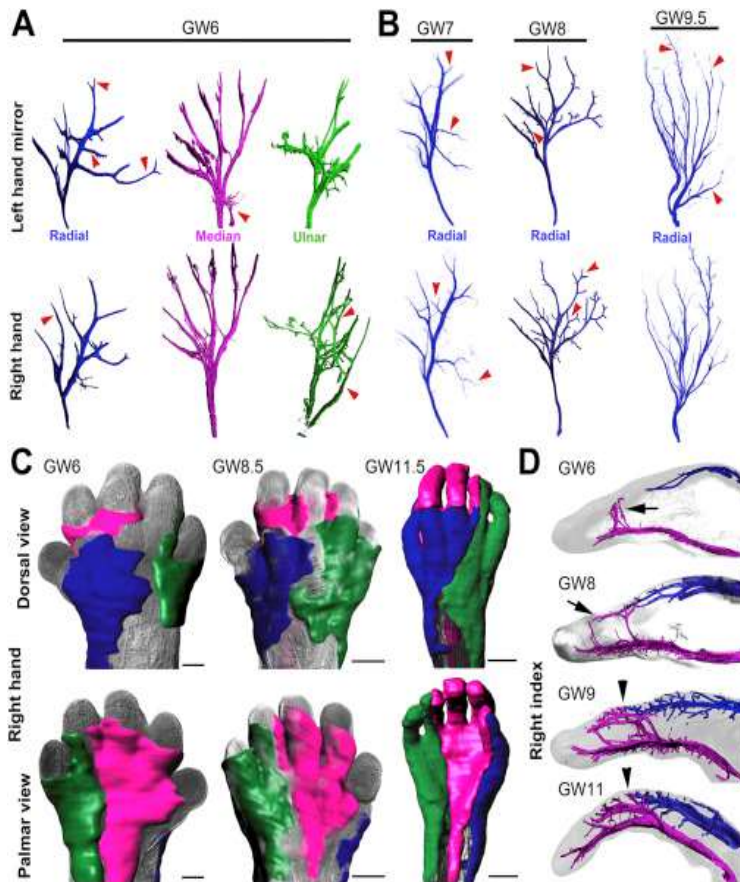
Median Nerve



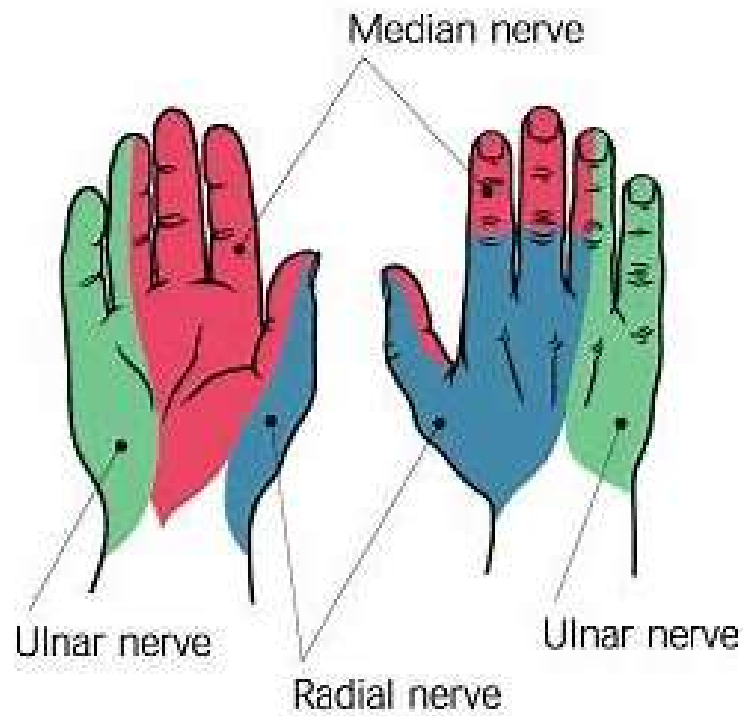
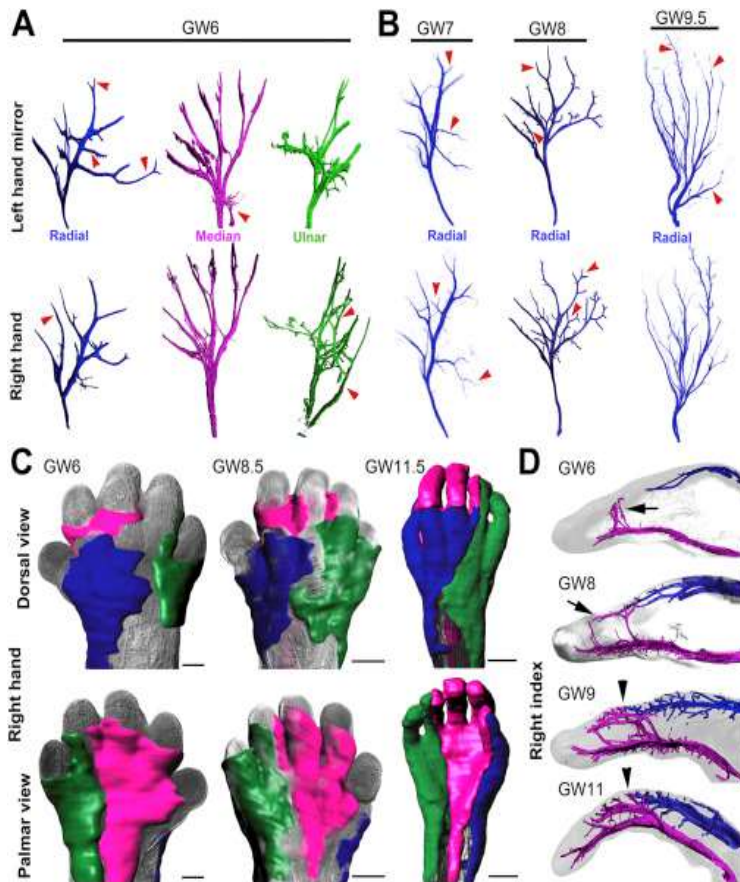
Sensory Distribution Median Nerve



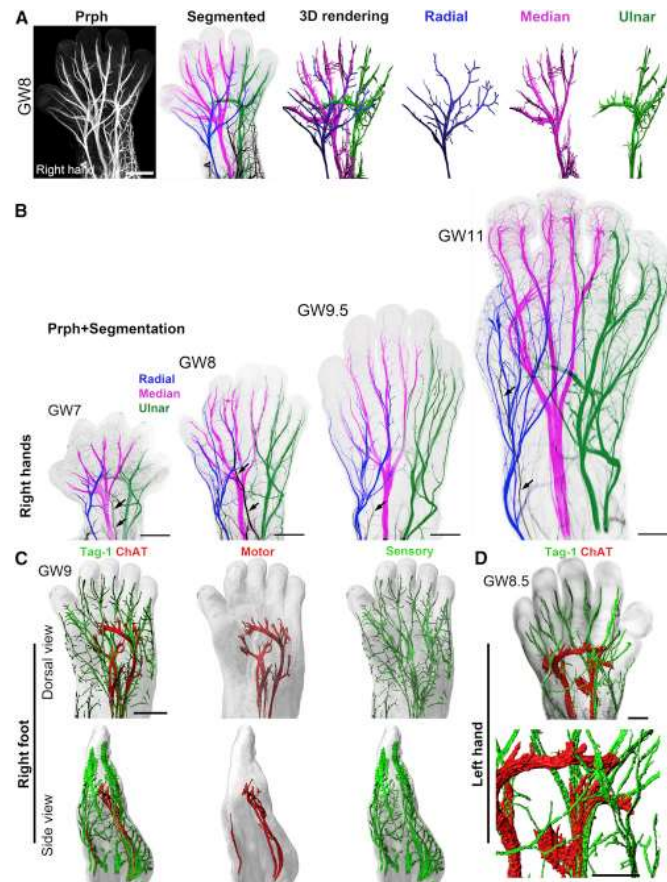
Comparison: Embryological vs Adult Sensory Innervation



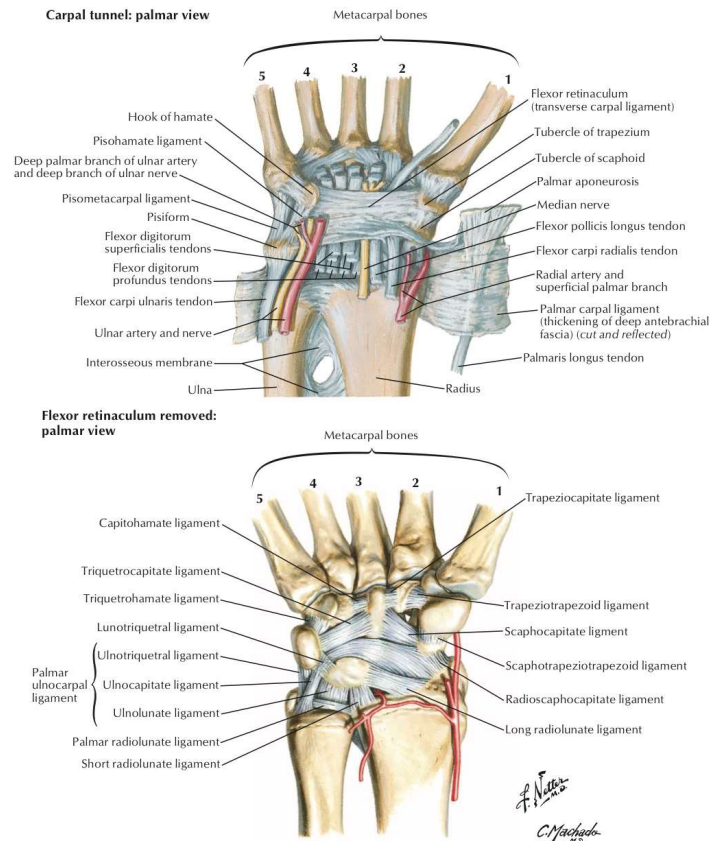
Comparison: Embryological vs Adult Sensory Innervation



Sensory and motor nerve development



Carpal Tunnel/ Palmar View



Lunate/Capitate

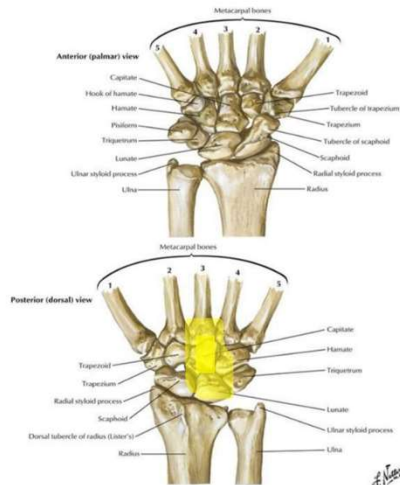


PLATE 439 Carpal Bones
See also [Plate 425](#)

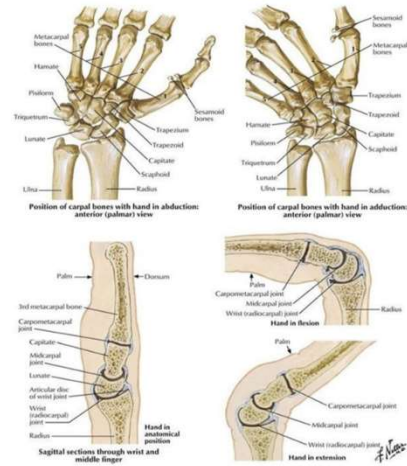


PLATE 440 Movements of Wrist